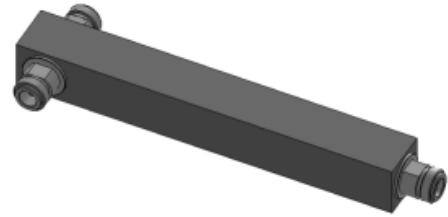


Dual-band Low Loss Reactive Power Splitters

300-960MHz N-Connectors, 2 Ways

- Dual-Band Frequency Range, Tetra & Cellular
- 300Watt Average Power
- Low Insertion Loss
- High Reliability
- Environment IP65
- N-female Connectors



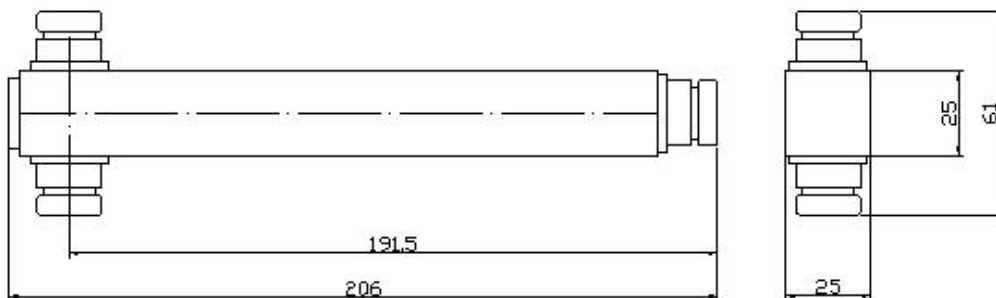
This BXS-2-NFT two ways High Powers Splitter is designed to evenly split power cellular signals with minimal reflections or loss. Its reactive design employs no resistors eliminating their contribution to PIM and the potential of their damage. Designed with only screw joint and an air dielectric, the PIM and loss has been minimized and reliability enhanced. All of them are conformance to IP65 specification. Its mechanical shape allows to be fixed on the wall or the pole easily.

The wide frequency range covering 300~960MHz allows use with multiple-band antennas and leaky cable systems.

VSWR:	1.35:1 Max.
Insertion Loss:	0.1dB, Max
Power Rating:	300W, avg.; 1.5KW peak
PIM, Passive IM:	-150dBc, 2x43dBm
Input Impedance:	50 ohm
Temperature:	-35° to +75°
Environment:	IP65, RoHS compliant
Finish: Connectors:	N (f), Silver or tri-plate
Housing:	Passivated aluminum or powder paint
Mounting:	Bracket for wall mounting included in the scope of supply.
DC capability:	DC transmission between all ports

PN.	Frequency Band, MHz	Split	Split Loss, dB	Weight, g
BXS-2-NFT	300~960	2	3	380

Dimensions, mm



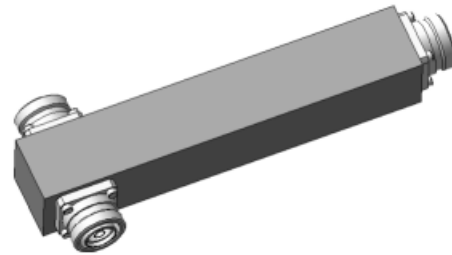
BXS-2-NFT

All Specifications are subject to change without prior notice

Dual-band Low Loss Reactive Power Splitters

300-960MHz DIN-Connectors, 2 Ways

- Dual-Band Frequency Range, Tetra & Cellular
- 700Watt Average Power
- Low Insertion Loss
- High Reliability
- Environment IP65
- 7/16 Din-female Connectors



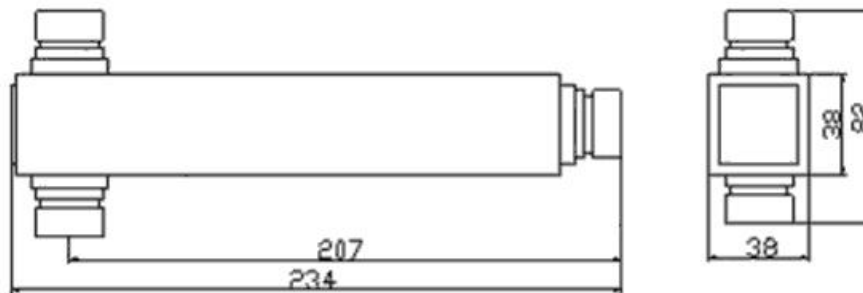
This BXS-2-DFT two ways High Powers Splitter is designed to evenly split power cellular signals with minimal reflections or loss. Its reactive design employs no resistors eliminating their contribution to PIM and the potential of their damage. Designed with only screw joint and an air dielectric, the PIM and loss has been minimized and reliability enhanced. All of them are conformance to IP65 specification. Its mechanical shape allows to be fixed on the wall or the pole easily.

The wide frequency range covering 300~960MHz allows use with multiple-band antennas and leaky cable systems.

VSWR:	1.35:1 Max.
Insertion Loss:	0.1dB, Max
Power Rating:	700W, avg.; 1.5KW peak
PIM, Passive IM:	-150dBc, 2x43dBm
Input Impedance:	50 ohm
Temperature:	-35° to +75°
Environment:	IP65, RoHS compliant
Finish: Connectors:	7/16 Din (f), tri-plate
Housing:	Passivated aluminum or powder paint
Mounting:	Bracket for wall mounting included in the scope of supply.
DC capability:	DC transmission between all ports

PN.	Frequency Band, MHz	Split	Split Loss, dB	Weight, g
BXS-2-DFT	300~960	2	3	1100

Dimensions, mm



BXS-2-DFT

All Specifications are subject to change without prior notice